

 MAX Nozzle

Conversion Kit

Emergency Vehicle Exhaust Conversion Kit

Upgrade Any System to the Nederman MAX Nozzle!

Reduce maintenance and repair costs for your existing vehicle exhaust extraction system.

The Nederman MAX Nozzle Conversion Kit is a low maintenance solution that improves system performance. Its design allows ambient air to mix in the air stream - immediately reducing the emission temperature up to 50% at the point of capture. This prolongs component life and prevents burning hazards.



Conversion Kit Components

- 1 Tailpipe Adapter Kit (adapter and clamp)
- 2 MAX Nozzle with 4" or 6" Elbow (based on system requirements)
- 3 High Temperature Flexible Hose with Wear Strip and Safety Disconnect



MAX Nozzle

Product Features

Rubber Impact Bumper

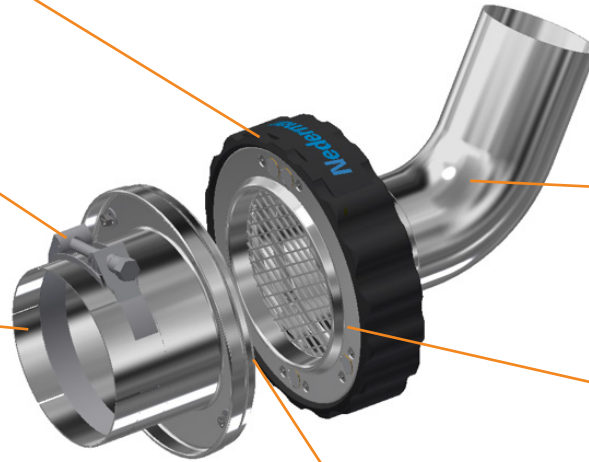
Bumper to prevent damage from swinging impact upon release.

Compression Clamp

Stainless steel clamp secures adapter to tailpipe.

Tailpipe Adapter

Secures to tailpipe and includes features that increase the durability and reduce on-vehicle damage.



High Temperature Exhaust Hose

Multi-layered, synthetic exhaust hose with wear strips rated for high temperature exposure.



Nickel Plated Finish

Bright nickel finish for improved aesthetics and coating that improves durability and corrosion resistance.

High Strength Magnets

High temperature Samarium Cobalt (SmCo) magnets in arrangement that facilitates smooth and reliable release from tailpipe.



Durable Magnet Contact Plate

Thick, steel plate that improves "on-the-road" durability and increases magnetic strength.

Sizes and Specifications

Dimensions inches (mm)

Nominal Hood Size	4 (100)	4 (100)	4 (100)	6 (152)	6 (152)	6 (152)	6 (152)
Tailpipe Diameter Hood Size	3 (76)	3.5 (89)	4 (100)	5 (127)	5 (127)	6 (152)	6 (152)
Hose Takeoff Diameter	4 (100)	4 (100)	4 (100)	4 (100)	6 (152)	4 (100)	6 (152)

Complete System Accessories

Track ST

Free-hanging, looping exhaust hose equipped with balancer and trolley that glides on the aluminum track.



Rail

High capacity, drive through system supporting up to two vehicle attachments (high level or low level tail pipes) to the same rail each.



Controls

UL listed control panels start and stop fan automatically.



Actuators

Dashboard transmitters or in-duct pressure switches turn exhaust fan on when the engine turns on.



Pressure Switch



Safety Disconnect

Standard accessory included within flex duct to release in case of a failed disconnect.



Exhaust Fans

Wide range of direct-drive exhaust fans for your specific airflow and static pressure requirements.

